

Vickers®

# Accessories



## Accessories for Hydraulic Systems



**VICKERS**

Rev. 04/99

# Introduction

---

Vickers accessories are designed to facilitate the installation, or augment the start-up or performance, of Vickers primary components and systems on industrial and mobile machinery. The accessories are also compatible with other product brands.

## Table of Contents

---

Air Bleed Valves .....	3
Ball Shuttle Valves .....	4
Bolt Kits .....	5
Flanges	
SAE 4-bolt .....	9
Square Flanges and Unions .....	11
Foot Bracket Kits for Pumps and Motors .....	15
Needle Valves .....	16
Angle and Globe Valves, Needle and Plug Types .....	18
Oil Coolers	
Air Type .....	20
Water Type .....	26
Pressure Gages	
Diaphragm Type .....	32
Bourdon Tube .....	33
Spring-loaded .....	35
Reservoir Filler-breather .....	36
Vacuum and Pressure Switches .....	37

# Air Bleed Valves

## Usage and Operation

This valve may be used to simplify pump priming at start-up in a blocked circuit, or to remove air trapped in the system.

When used to facilitate priming, the valve is teed into the pump outlet, as close to the pump as possible, and upstream of the balance of the circuit.

It lets air pass at low pressure (start-up) to the drain, and shuts off oil flow at pressures above 0,83 bar (12 psi).

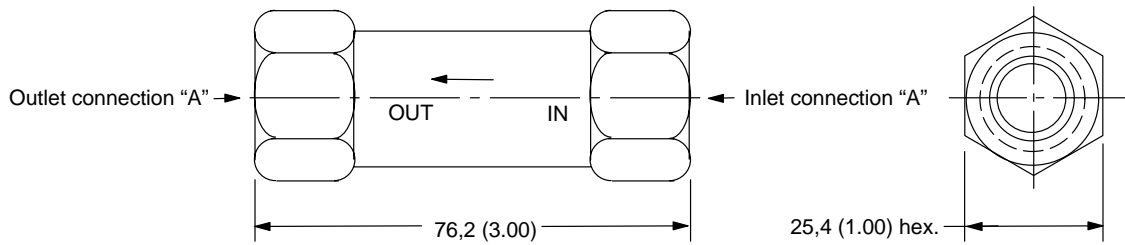
The valve will pass 7,6 L/min (2 USgpm) just before shutting off. Therefore, it is recommended only for systems with a minimum supply that exceeds 7,6 L/min (2 USgpm.)

When used to remove air trapped in the system, the valve should be placed at the highest point of the circuit

## Pressure and Weight

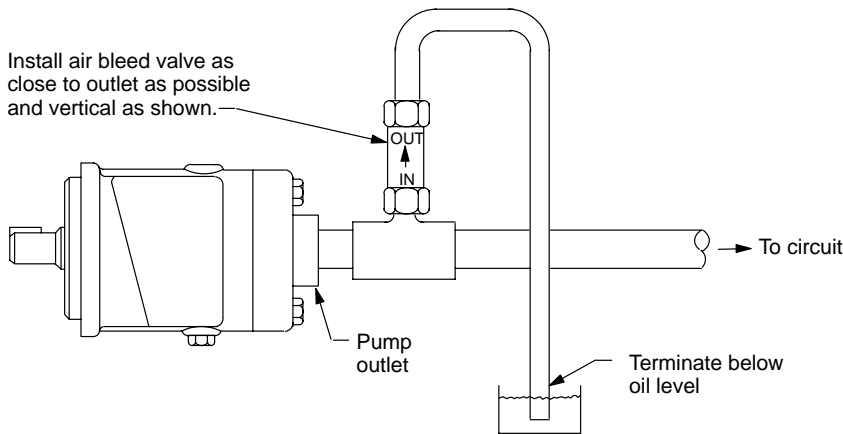
Maximum pressure is 210 bar (3000 psi). Approximate weight is 0,34 kg (12 oz).

## Dimensions in Millimeters (Inches)

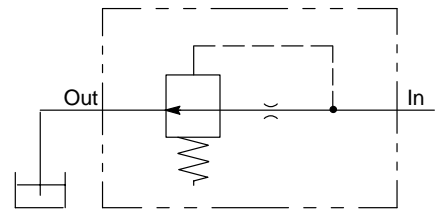


Model Number	Connection "A"
ABT-03-10	3/8 NPTF pipe thread
ABS-12-10	.750-16 UNF-2B straight thread for .50 O.D. tube

## Typical Pump Priming Installation



## Air Bleed Valve Symbol



**Important:** Terminate return line to reservoir below oil level.