

General Description

Cartridge style FL101 screen filters can be used in any hydraulic system to prevent large particle contamination. This can be used as a substitute for customers that require screens on their valves. It can be used in conjunction with a filter, but never without a filter.

Operation

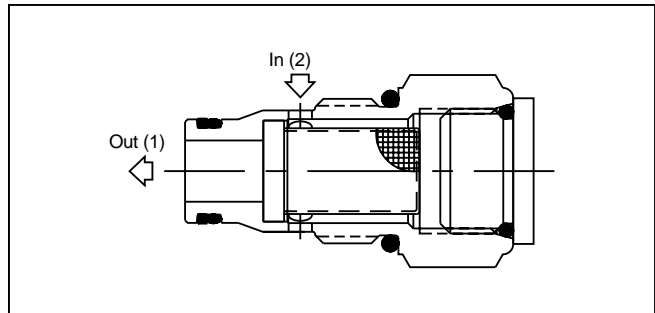
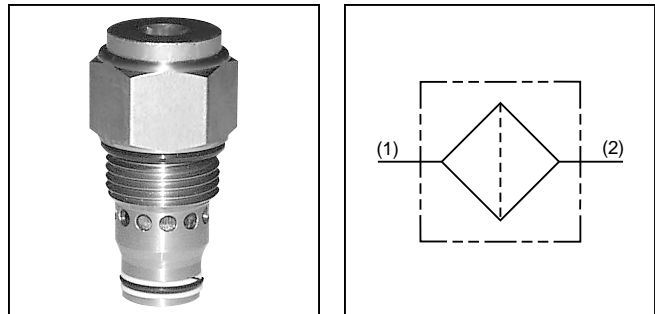
Flow enters the side of the cartridge passing through either a coarse screen (140 mesh) or a fine screen (30 mesh). The flow should never pass from the nose to the side; as any particles will then be trapped inside of the cartridge. Regardless of the level of filtration in the hydraulic system, this cartridge should be changed on a regular basis.

Features

- Low pressure drop through the cartridge valve
- Easy to service
- Common cavity readily adapts to a manifold

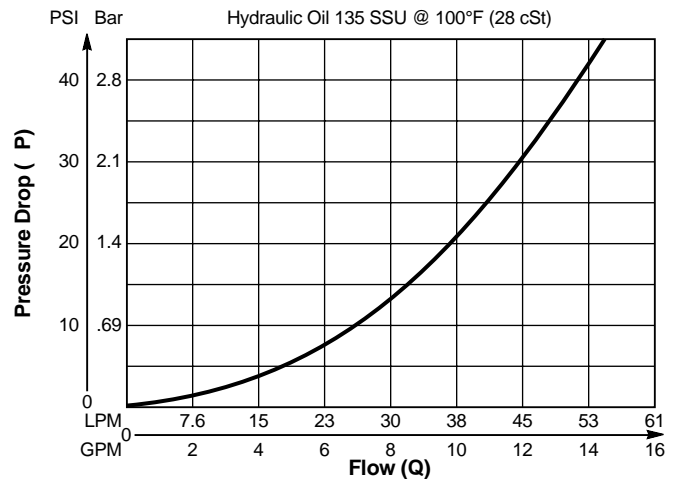
Specifications

Maximum Flow	56.3 LPM (15 GPM)
Maximum Inlet Pressure	245 Bar (3500 PSI)
Operating Temp. Range (Ambient)	-40°C to +93.3°C (Nitrile) (-40°F to +200°F) -31.7°C to +121.1°C (Fluorocarbon) (-25°F to +250°F)
Cartridge Material	All parts steel. All operating parts hardened steel.
Body Material	Steel or Aluminum
Filtration	ISO code 16/13, SAE Class 4 or better
Mounting	No Restrictions
Cavity	Common Cavity No. C10-2



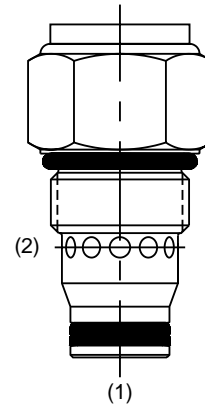
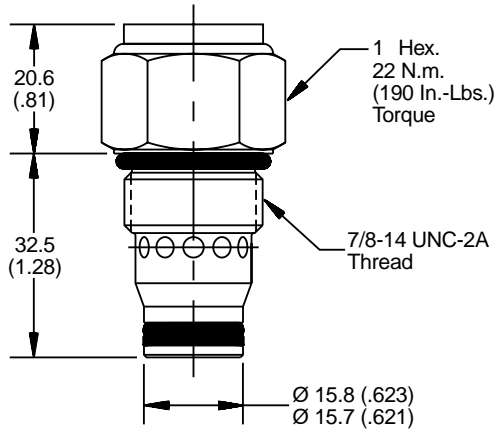
Performance Curve

Pressure Drop vs. Flow
 (Through cartridge only)

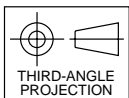
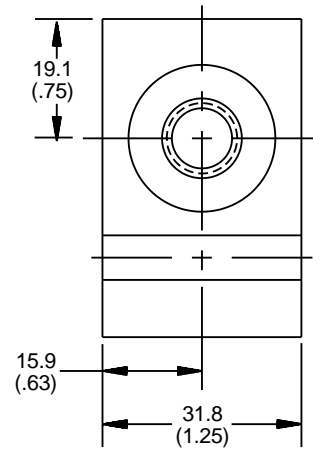
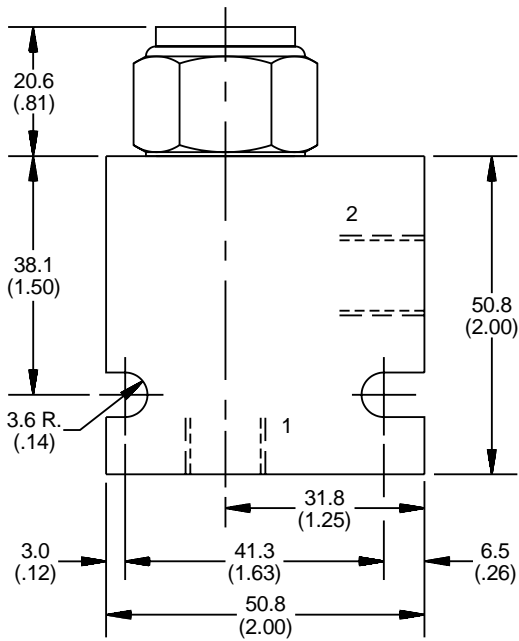


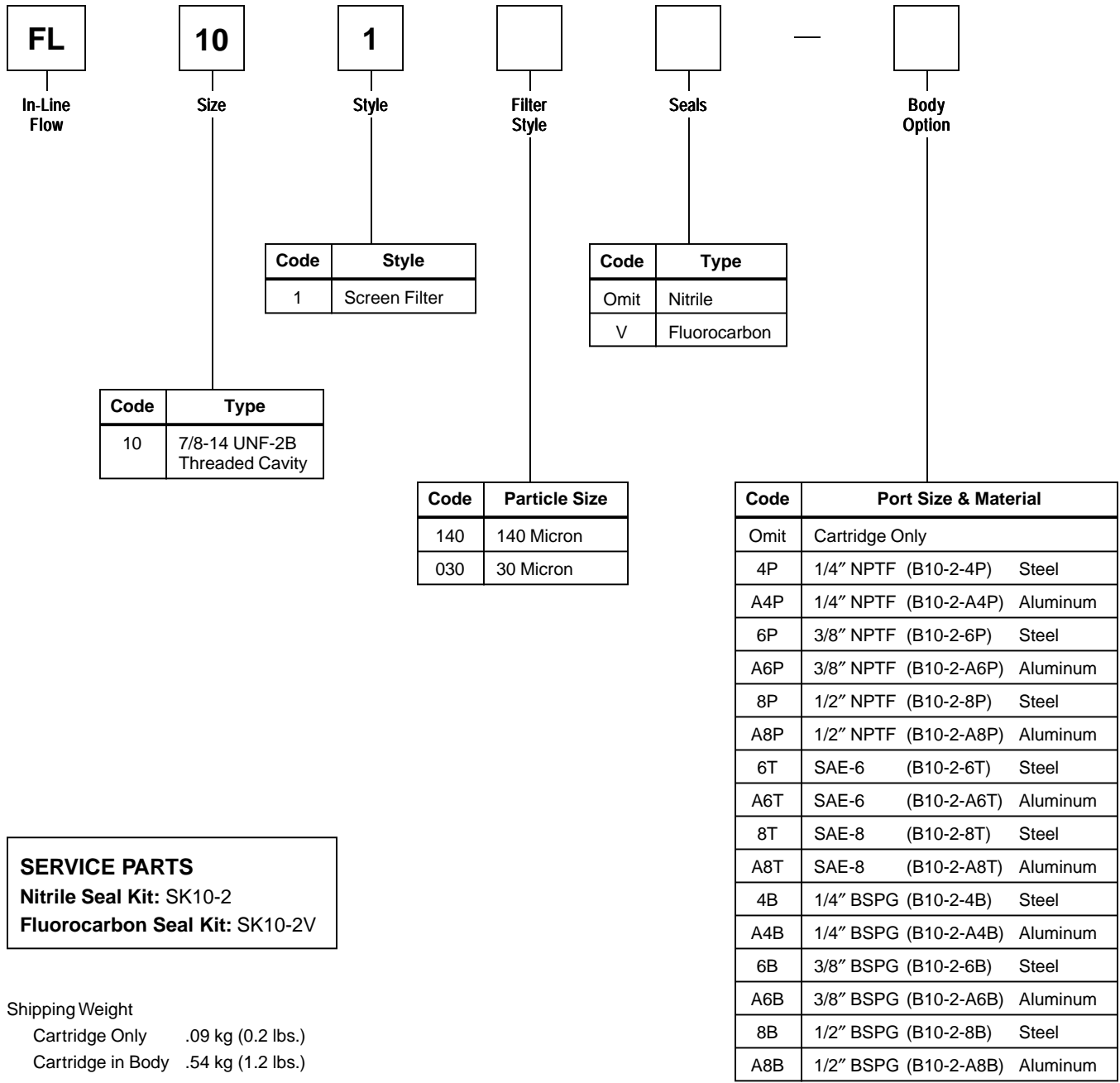
*Inch equivalents for millimeter dimensions are shown in (**)

Cartridge Only



Cartridge In Body





SERVICE PARTS
 Nitrile Seal Kit: SK10-2
 Fluorocarbon Seal Kit: SK10-2V

Shipping Weight
 Cartridge Only .09 kg (0.2 lbs.)
 Cartridge in Body .54 kg (1.2 lbs.)