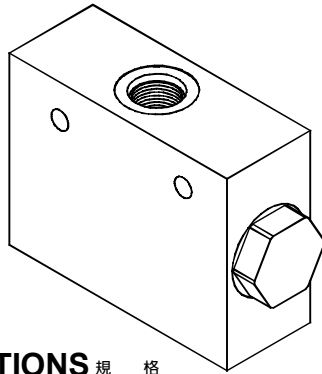
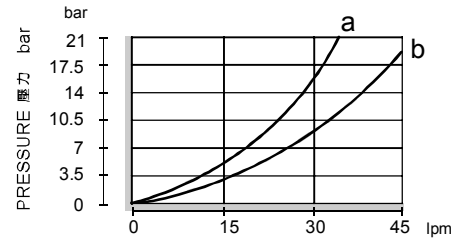


◆ **MODEL** 型 式
VFD-03



◆ **PERFORMANCE** 特性曲線

Test Conditions 測試條件
Oil Temperature 油溫度: 50°C (122°F)
Viscosity 黏性: 35 cSt (163 SSU)



◆ **SPECIFICATIONS** 規 格

Model Number 型式號碼	Operating Pressure 操作壓力 bar	Flow 流量 lpm	Weight 重量 Kg
VFD-03	250 (3626 psi)	45 (11.89 gpm)	0.6 (1.32 lbs)
Fluid Type 流體型式		ISO VG 32, 46, 68	
Viscosity 黏性 cSt		10~400 (59~1854 SSU)	
Operating Temperature 操作溫度 °C		-15~70 (-5~158 °F)	
Contamination Level 污染標準		ISO4406. 21/19/16 NAS1638,10	

◆ **HOW TO ORDER** 編號說明

1	2	3	4
VFD	03	— 07	— *

1 VALVE SERIES 系列名稱

VFD = FLOW DIVIDER Valves 分流閥

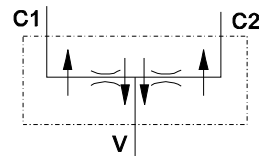
2 SUBPLATE MOUNTING SIZE 稱呼口徑

03 : G 3/8

3 FLOW SPECIFICATIONS 流量規格

07: 2.3~7.6 l/min Division or combination ratio: 50%:50%
15: 4.5~15 l/min 分流比例
22: 6.8~22.7 l/min Flow Accuracy: 3% ~ 10%
30: 9~30 l/min 分流精度
37: 11~37 l/min
45: 13.5~45 l/min

◆ **CONTROL PORT(S)** 動作形式

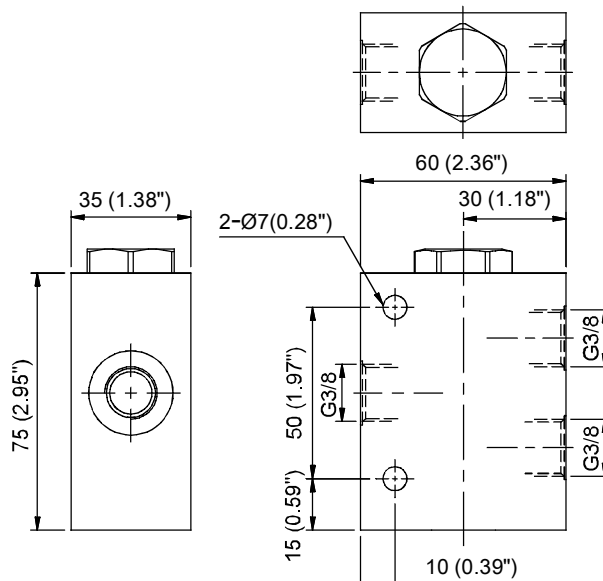


4 THREADED TYPE 螺紋規格

1P: PT 2N: NPT
3G: PF(G) 4A: SAE
5B: BSP

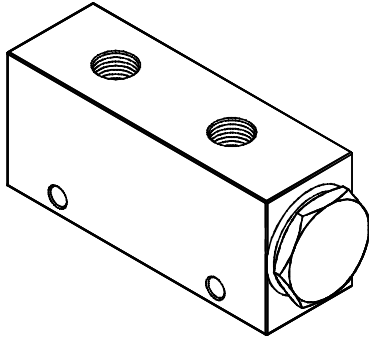
◆ **DIMENSIONS**

外型尺寸圖



◆ MODEL 型式

VFD-04

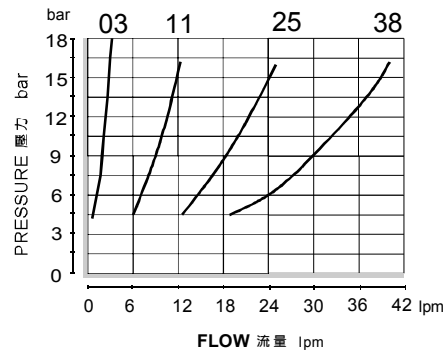


◆ PERFORMANCE 特性曲線

Test Conditions 測試條件

Oil Temperature 油溫度: 50°C (122°F)

Viscosity 黏性: 35 cSt (163 SSU)



◆ SPECIFICATIONS 規格

Model Number 型式號碼	Operating Pressure 操作壓力 bar	Flow 流量 lpm	Weight 重量 Kg
VFD-04	250 (3626 psi)	38 (10.04 gpm)	0.8 (1.76 lbs)
Fluid Type 流體型式		ISO VG 32, 46, 68	
Viscosity 黏性 cSt		10~400 (59~1854 SSU)	
Operating Temperature 操作溫度 °C		-15~70 (-5~158 °F)	
Contamination Level 污染標準		ISO4406. 21/19/16 NAS1638,10	

◆ HOW TO ORDER 編號說明

1	2	3	4
VFD	04	— 11	— *

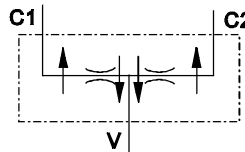
1 VALVE SERIES 系列名稱

VFD = FLOW DIVIDER 分流閥

2 SUBPLATE MOUNTING SIZE 稱呼口徑

04=1/2"

◆ CONTROL PORT(S) 動作形式



3 FLOW SPECIFICATIONS 流量規格

03: 1~3 l/min 06: 2.8~6 l/min

11: 6.5~11 l/min 25: 10~25 l/min

38: 25~38 l/min

Division or combination ratio: 50%:50%

分流比例

Flow Accuracy: ±3%

分流精度

4 THREADED TYPE

螺紋規格

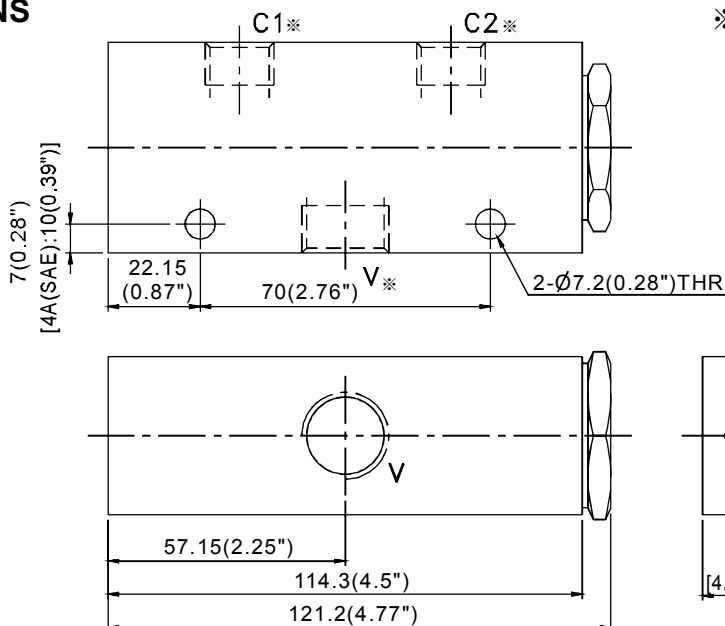
1P: PT 2N: NPT

3G: PF(G) 4A: SAE

5B: BSP

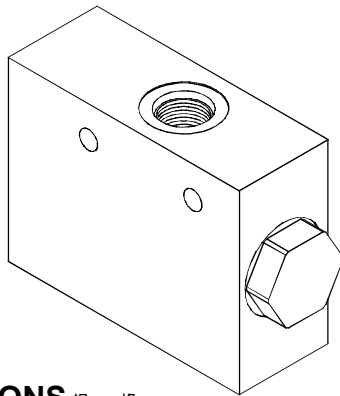
◆ DIMENSIONS 外型尺寸圖

外型尺寸圖



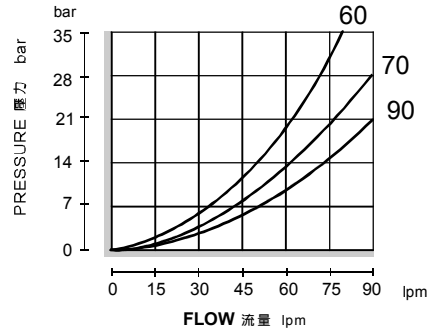
※ Flow Specifications 流量規格	C1	C2	V
03	1/4"	1/4"	3/8"
06	1/4"	1/4"	3/8"
11	3/8"	3/8"	1/2"
25	3/8"	3/8"	1/2"
38	3/8"	3/8"	1/2"

◆ **MODEL** 型 式
VFD-05



◆ **PERFORMANCE** 特性曲線

Test Conditions 測試條件
Oil Temperature 油溫度: 50°C (122°F)
Viscosity 黏性: 35 cSt (163 SSU)



◆ **SPECIFICATIONS** 規 格

Model Number 型式號碼	Operating Pressure 操作壓力 bar	Flow 流量 lpm	Weight 重量 Kg
VFD-05	250 (3626 psi)	90 (23.78 gpm)	2.05 (4.52 lbs)
Fluid Type 流體型式		ISO VG 32, 46, 68	
Viscosity 黏性 cSt		10~400 (59~1854 SSU)	
Operating Temperature 操作溫度 °C		-15~70 (-5~158 °F)	
Contamination Level 污染標準		ISO4406. 21/19/16 NAS1638,10	

◆ **HOW TO ORDER** 編號說明

1	2	3	4
VFD	05	— 90	— *

1 VALVE SERIES 系列名稱

VFD = FLOW DIVIDER Valves 分流閥

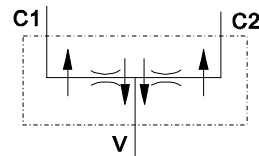
2 SUBPLATE MOUNTING SIZE 稱呼口徑

05: G 3/4

3 FLOW SPECIFICATIONS 流量規格

60: 30~60 l/min Division or combination ratio: 50%:50%
70: 43~74 l/min 分流比例
90: 53~90 l/min Flow Accuracy: 3% ~ 10%
分流精度

◆ **CONTROL PORT(S)** 動作形式

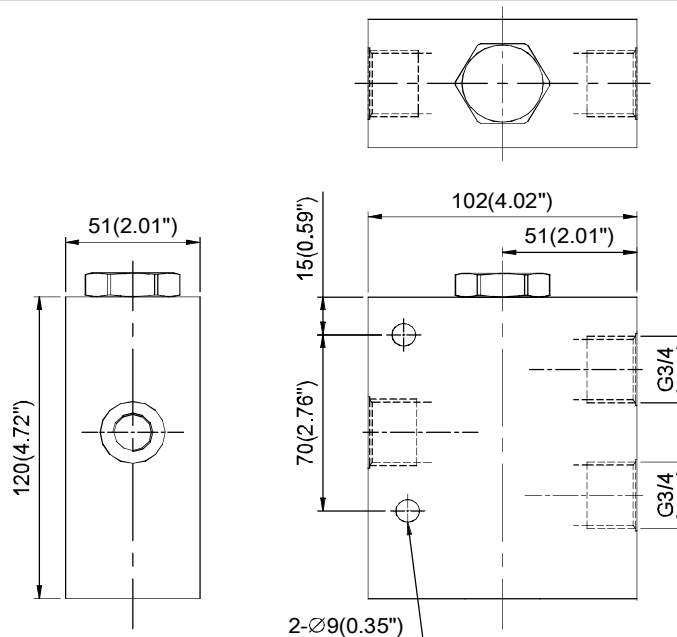


4 THREADED TYPE 螺紋規格

1P: PT 2N: NPT
3G: PF(G) 4A: SAE
5B: BSP

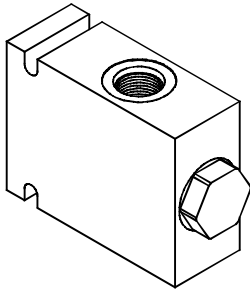
◆ **DIMENSIONS**

外型尺寸圖



◆ MODEL 型 式

VFD-06/08

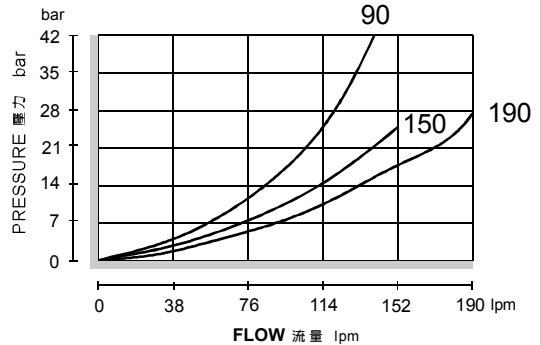


◆ DESCRIPTION 說明

Screw-in, cartridge-style, spool-type flow divider /combiner.
 In the dividing mode, the item will divert input flow from V to C2 and C1, based on the ratio specified, regardless of operating pressure. When the flow direction is reversed the valve will combine flows from C2 and C1 to port V. Synchronizing flow is provided in both the dividing and combining modes at "bottomed" conditions in cylinder applications and at stalled conditions in motor applications.
 螺紋插入式滑閥型分流/集流閥。
 當處於分流模式時，輸入流量從油口V按指定比例分流向油口C2和C1，不受工作壓力影響。當反向流動時，油口C2和C1的流量將匯集到油口3處。在"油缸到達最大行程"和"馬達空轉"情況下可提供分流、集流模式的同步運動。

◆ PERFORMANCE 特性曲線

Test Conditions 測試條件
 Oil Temperature 油溫度: 50°C (122°F)
 Viscosity 黏性: 35 cSt (163 SSU)



◆ SPECIFICATIONS 規 格

Model Number 型式號碼	Maximum Pressure 最大壓力 bar	Maximum Flow 最大流量 lpm	Weight 重量 Kg
VFD-06	350 (5076 psi)	220 (58.12 gpm)	4.9 (10.80 lbs)
VFD-08			4.9 (10.80 lbs)
Fluid Type 流體型式		ISO VG 32, 46, 68	
Viscosity 黏性 cSt		10~400 (59~1854 SSU)	
Operating Temperature 操作溫度 °C		-30~100 (-22~212°F)	
Contamination Level 污染標準		ISO4406. 21/19/16 NAS1638,10	

◆ HOW TO ORDER 編號說明

1	2	3	4	5
VFD	06	— 90	— *	— *

1 VALVE SERIES 系列名稱

VFD = FLOW DIVIDER 分流閥

2 SUBPLATE MOUNTING SIZE 稱呼口徑

06=3/4"
08=1"

3 FLOW SPECIFICATIONS 流量規格

90: 90 l/min 110: 110 l/min
150: 150 l/min 190: 194 l/min
220: 220 l/min

Division or combination ratio: 50%:50%
分流比例
Flow Accuracy: 3% ~ 10%
分流精度

4 THREADED TYPE

螺紋規格
1P: PT 2N: NPT
3G: PF(G) 4A: SAE
5B: BSP

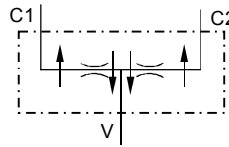
5 BODY MATERIAL 閥體材質

NONE (Standard): Aluminum-alloy
無 (標準): 鋁合金

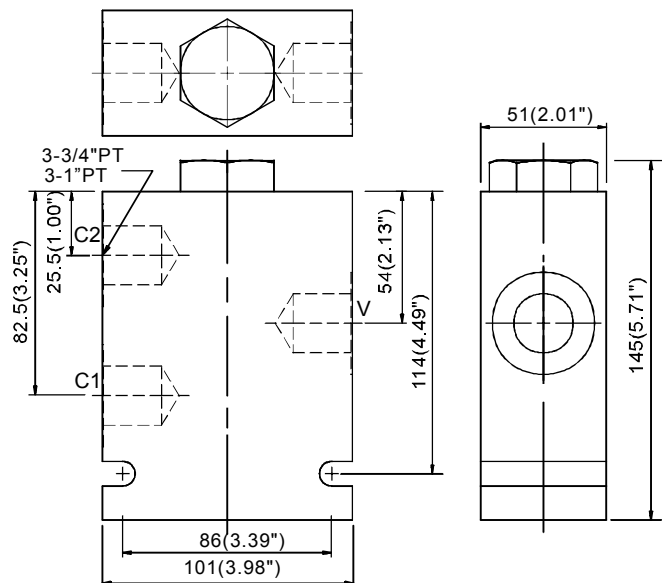
D: Nodular Ductile-Iron 球墨鑄鐵
S: Steel 鋼質

Body Material 閥體材質	Maximum Pressure 最大壓力 bar	Weight 重量 Kg
Aluminum (standard) 鋁 (標準)	250 (3626 psi)	2 (4.40 lbs)
Nodular Ductile-Iron 球墨鑄鐵	350 (5076 psi)	4.9 (10.80 lbs)
Steel 鋼	350 (5076 psi)	4.9 (10.80 lbs)

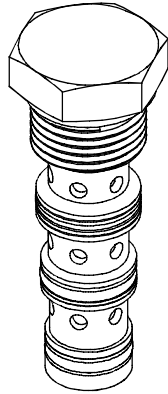
◆ CONTROL PORT(S) 動作形式



◆ DIMENSIONS 外型尺寸圖

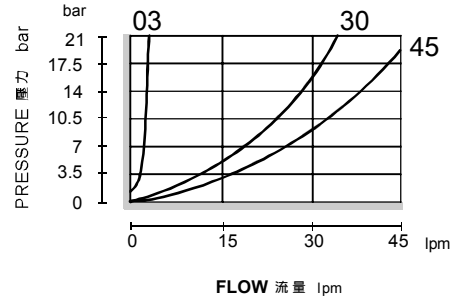


◆ **MODEL 型 式**
VFD-10



◆ **PERFORMANCE 特性曲線**

Test Conditions 測試條件
Oil Temperature 油溫度: 50°C (122°F)
Viscosity 黏性: 35 cSt (163 SSU)



◆ **SPECIFICATIONS 規 格**

Model Number 型式號碼	Operating Pressure 操作壓力 bar	Flow 流量 lpm	Weight 重量 Kg
VFD-10	350 (5076 psi)	45 (11.89 gpm)	0.15 (0.33 lbs)
Fluid Type 流體型式		ISO VG 32, 46, 68	
Viscosity 黏性 cSt		10~400 (59~1854 SSU)	
Operating Temperature 操作溫度 °C		-15~70 (-5~158 °F)	
Contamination Level 污染標準		ISO4406. 21/19/16 NAS1638,10	

◆ **HOW TO ORDER 編號說明**

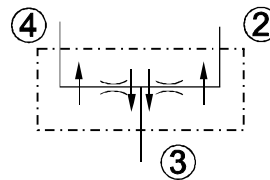
1	2	3
VFD	10	— 45

1 VALVE SERIES 系列名稱
VFD = FLOW DIVIDER 分流閥

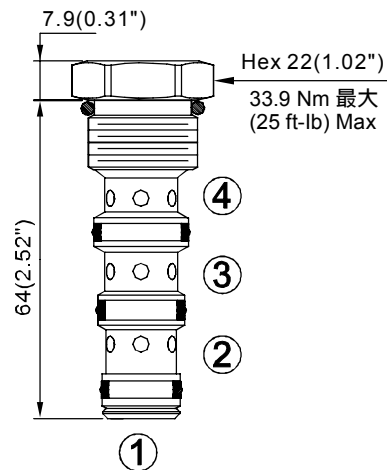
2 SUBPLATE MOUNTING SIZE 稱呼口徑
Size : 10
Cavity 孔口: CS10A-4N
See Page Appendixes-A_005
見附錄A_005 頁面

3 FLOW SPECIFICATIONS 流量規格
03: 1.2~3 l/min
07: 2.3~7.6 l/min
15: 4.5~15 l/min
22: 6.8~22.7 l/min
30: 9~30 l/min
37: 11~37 l/min
45: 13.5~45 l/min
Division or combination ratio: 50%: 50%
分流比例
Flow Accuracy: 3% ~ 10%
分流精度

◆ **CONTROL PORT(S) 動作形式**

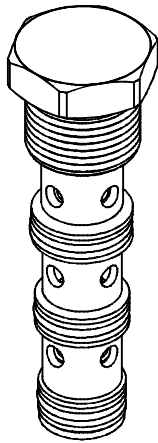


◆ **DIMENSIONS 外型尺寸圖**



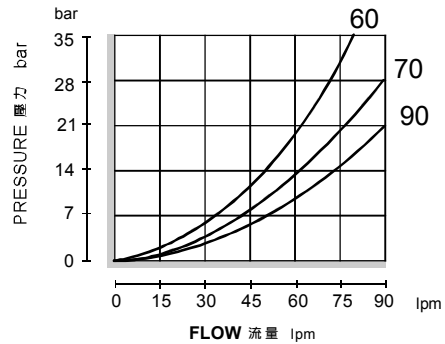
◆ MODEL 型 式

VFD-12



◆ PERFORMANCE 特性曲線

Test Conditions 測試條件
 Oil Temperature 油溫度: 50°C (122°F)
 Viscosity 黏性: 35 cSt (163 SSU)



◆ SPECIFICATIONS 規 格

Model Number 型式號碼	Operating Pressure 操作壓力 bar	Flow 流量 lpm	Weight 重量 Kg
VFD-12	350 (5076 psi)	90 (23.78 gpm)	0.3 (0.66 lbs)
Fluid Type 流體型式		ISO VG 32, 46, 68	
Viscosity 黏性 cSt		10~400 (59~1854 SSU)	
Operating Temperature 操作溫度 °C		-15~70 (-5~158°F)	
Contamination Level 污染標準		ISO4406. 21/19/16 NAS1638,10	

◆ HOW TO ORDER 編號說明

1	2	3
VFD	12	— 60

1 VALVE SERIES 系列名稱

VFD = FLOW DIVIDER 分流閥

2 SUBPLATE MOUNTING SIZE 稱呼口徑

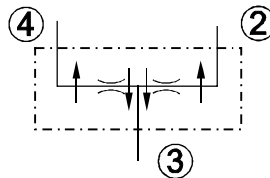
Size : 12
 Cavity 孔口: CS12A-4N
 See Page Appendixes-A_005
 見附錄A_005 頁面

3 FLOW SPECIFICATIONS 流量規格

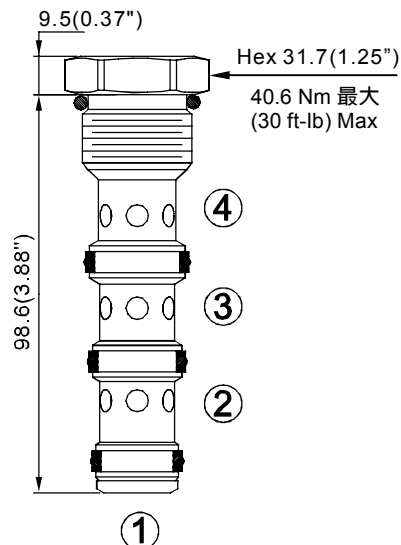
60: 30~60 l/min
 70: 43~74 l/min
 90: 53~90 l/min

Division or combination ratio: 50%: 50%
 分流比例
 Flow Accuracy: 3% ~ 10%
 分流精度

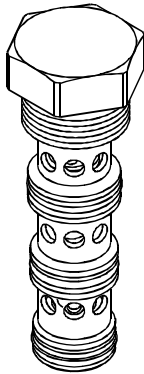
◆ CONTROL PORT(S) 動作形式



◆ DIMENSIONS 外型尺寸圖



◆ **MODEL 型 式**
VFD-16

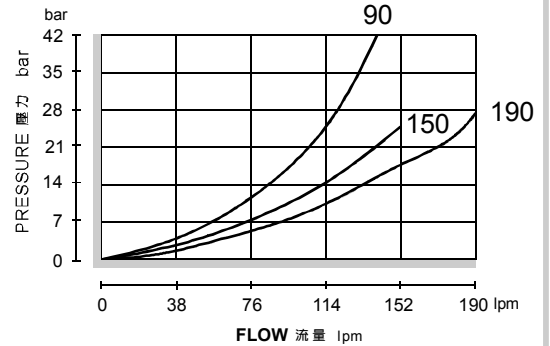


◆ **DESCRIPTION 說明**

Screw-in, cartridge-style, spool-type flow divider /combiner.
In the dividing mode, the item will divert input flow from 3 to 2 and 4, based on the ratio specified, regardless of operating pressure. When the flow direction is reversed the valve will combine flows from 2 and 4 to port 3. Synchronizing flow is provided in both the dividing and combining modes at "bottomed" conditions in cylinder applications and at stalled conditions in motor applications.
螺紋插入式滑閥型分流/集流閥。
當處於分流模式時，輸入流量從油口3按指定比例分流向油口2和4，不受工作壓力影響。當反向流動時，油口2和4的流量將匯集到油口3處。在"油缸到達最大行程"和"馬達空轉"情況下可提供分流、集流模式的同步運動。

◆ **PERFORMANCE 特性曲線**

Test Conditions 測試條件
Oil Temperature 油溫度: 50°C (122°F)
Viscosity 黏性: 35 cSt (163 SSU)



◆ **SPECIFICATIONS 規 格**

Model Number 型式號碼	Operating Pressure 操作壓力 bar	Flow 流量 lpm	Weight 重量 Kg
VFD-16	350 (5076 psi)	194 (51.25 gpm)	0.4 (0.88 lbs)
Fluid Type 流體型式		ISO VG 32, 46, 68	
Viscosity 黏性 cSt		10~400 (59~1854 SSU)	
Operating Temperature 操作溫度 °C		-15~70 (-5~158 °F)	
Contamination Level 污染標準		ISO4406. 21/19/16 NAS1638,10	

◆ **HOW TO ORDER 編號說明**

1	2	3
VFD	16	— 90

1 VALVE SERIES 系列名稱

VFD = FLOW DIVIDER 分流閥

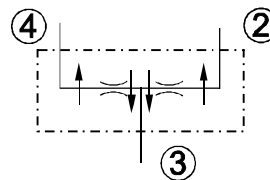
2 SUBPLATE MOUNTING SIZE 稱呼口徑

Size : 16
Cavity 孔口: CS16A-4N
See Page Appendixes-A_005
見附錄A_005 頁面

3 FLOW SPECIFICATIONS 流量規格

90: 90 l/min
110: 110 l/min
150: 150 l/min
190: 194 l/min
220: 220 l/min
Division or combination ratio: 50%: 50%
分流比例
Flow Accuracy: 3% ~ 10%
分流精度

◆ **CONTROL PORT(S) 動作形式**



◆ **DIMENSIONS 外型尺寸圖**

