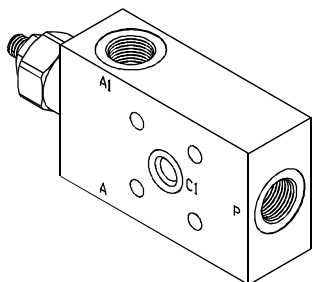
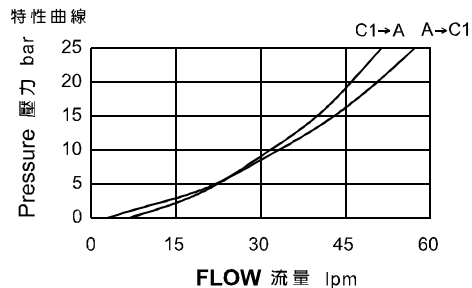


◆ **MODEL 型式**  
VBSE-03G



◆ **PERFORMANCE (Cartridge Only)**



◆ **SPECIFICATIONS 規格**

Model Number 型式號碼	Maximum Pressure 最大壓力 bar	Adjustment Pressure 壓力調整範圍 bar	Maximum Flow 最大流量 lpm	Pilot Ratio 引導比例	Weight 重量 Kg
VBSE-03G	500 (7252 psi)	100~350	45 (11.89 gpm)	4.3 : 1	1.3 (2.87 lbs)
VBSE-04G			60 (15.85 gpm)		1.3 (2.87 lbs)
<b>Fluid Type</b> 流體型式		ISO VG 32, 46, 68			
<b>Viscosity</b> 黏性 cSt		10~400 (59~1854 SSU)			
<b>Operating Temperature</b> 操作溫度 °C		-15~70 (-5~158 °F)			
<b>Contamination Level</b> 污染標準		ISO4406. 21/19/16 NAS1638,10			

◆ **HOW TO ORDER 編號說明**

1	2	3	4	5
VBSE	03G	— *	— *	— *

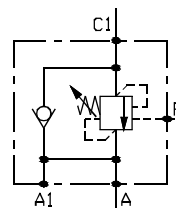
**1 VALVE SERIES** 系列名稱  
VBSE=COUNTER BALANCE VALVES  
抗衡閥

**2 SUBPLATE MOUNTING SIZE** 稱呼口徑  
03G : G3/8  
04G : G1/2

**3 ADJUSTMENT PRESSURE** 壓力調整範圍

Order 編號	Adjustment pressure 壓力調整範圍
35	100 ~ 350 (bar)

◆ **CONTROL PORT(S) 動作形式**



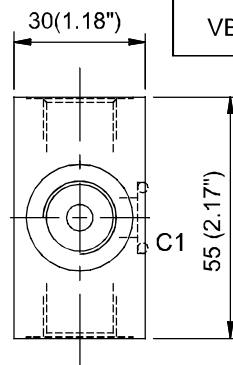
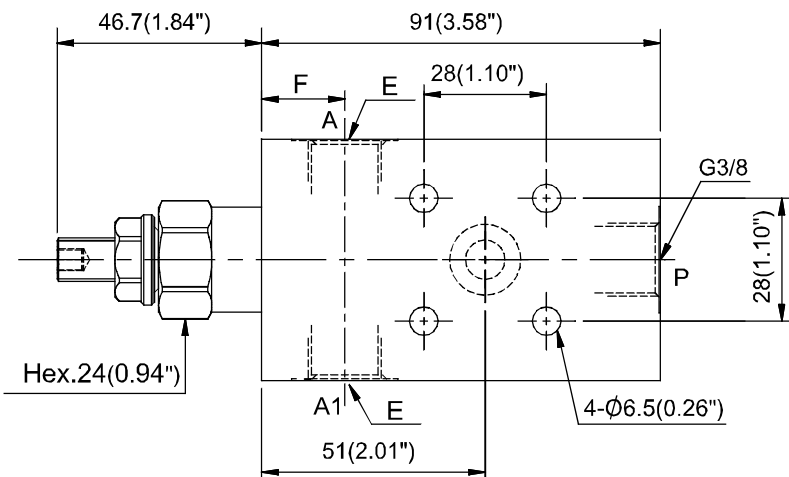
**4 THREADED TYPE** 螺紋規格

1P : PT      3G : PF(G)      5B : BSP  
2N : NPT      4A : SAE

**5 PILOT RATIO** 引導比例

4A : 4.3:1

◆ **DIMENSIONS 外型尺寸圖**

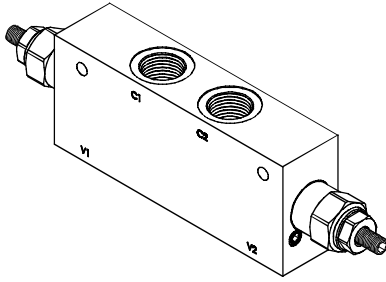


Model 型式	Size 尺寸	
	E	F
VBSE-03G	G3/8	20 (0.79")
VBSE-04G	G1/2	19.5 (0.77")

# PRESSURE CONTROL VALVES 壓力控制閥

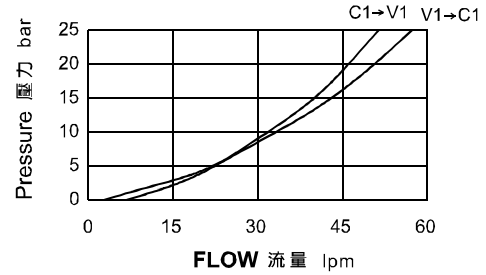
## VBSE SERIES CARTRIDGE TYPE COUNTER BALANCE VALVES VBSE 系列插入式抗衡閥

### ◆ MODEL 型式 VBSE-120



### ◆ PERFORMANCE (Cartridge Only)

特性曲線



### ◆ SPECIFICATIONS 規格

Model Number 型式號碼	Maximum Pressure 最大壓力 bar	Adjustment Pressure 壓力調整範圍 bar	Maximum Flow 最大流量 lpm	Pilot Ratio 引導比例	Weight 重量 Kg
VBSE-120	500 (7252 psi)	100~350	60 (15.85 gpm)	4.3 : 1	2.6 (5.73 lbs)
VBSE-380	500 (7252 psi)	100~350	45 (11.89 gpm)	4.3 : 1	2.6 (5.73 lbs)
<b>Fluid Type</b> 流體型式		ISO VG 32, 46, 68			
<b>Viscosity</b> 黏性 cSt		10~400 (59~1854 SSU)			
<b>Operating Temperature</b> 操作溫度 °C		-15~70 (-5~158 °F)			
<b>Contamination Level</b> 污染標準		ISO4406. 21/19/16 NAS1638,10			

### ◆ HOW TO ORDER 編號說明

1	2	3	4	5
VBSE	120	— *	— *	— *

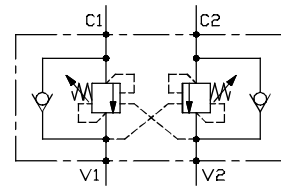
**1 VALVE SERIES** 系列名稱  
VBSE=COUNTER BALANCE VALVES  
抗衡閥

**2 SUBPLATE MOUNTING SIZE** 稱呼口徑  
120: 1/2"  
380: 3/8"

**3 ADJUSTMENT PRESSURE** 壓力調整範圍

Order 編號	Adjustment pressure 壓力調整範圍
35	100 ~ 350 (bar)

### ◆ CONTROL PORT(S) 動作形式

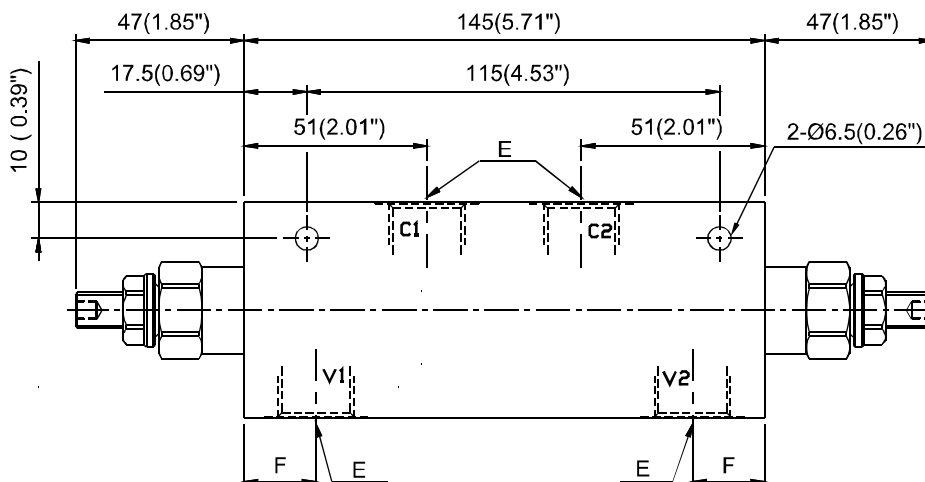


**4 THREADED TYPE** 螺紋規格  
1P : PT      3G : PF(G)      5B : BSP  
2N : NPT      4A : SAE

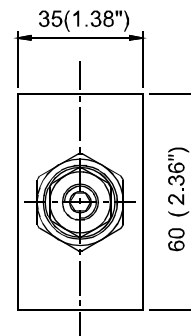
**5 PILOT RATIO** 引導比例  
4A : 4.3:1

### ◆ DIMENSIONS

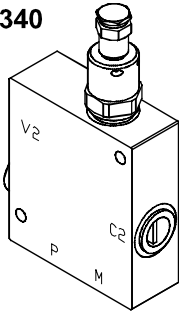
外型尺寸圖



Model 型式	Size 尺寸	E	F
VBSE-380	G3/8	20 (0.79")	
VBSE-120	G1/2	19 (0.75")	



◆ **MODEL 型 式**  
VBSE-340



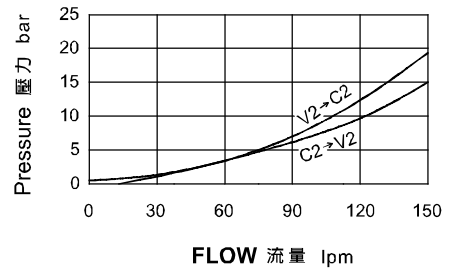
◆ **DESCRIPTION 說明**

Single overcenter valves, to be connected as shown.  
The oil flow from the screw side, is added to the pump flow, to speed the cylinder extension with low load.  
The function of counterbalance and relief are affected, when the pilot pressure exceed a preset value.

單一抗衡閥，連接如所示，來自螺桿側的流量，加上泵流量來加速油壓缸，在低承載時的速度，當引導壓力超過設定值時，此閥就有抗衡及洩荷的功能。

◆ **PERFORMANCE(Cartridge Only)**

特性曲線



◆ **SPECIFICATIONS 規 格**

Model Number 型式號碼	Maximum Pressure 最大壓力 bar	Adjustment Pressure 壓力調整範圍 bar	Maximum Flow 最大流量 lpm	Pilot Ratio 引導比例	Weight 重量 Kg
VBSE-340	500 (7252 psi)	100~350	150 (39.63 gpm)	4 : 1	3.6 (7.94 lbs)
<b>Fluid Type 流體型式</b>		ISO VG 32 , 46 , 68			
<b>Viscosity 黏性 cSt</b>		10~400 (59~1854 SSU)			
<b>Operating Temperature 操作溫度 °C</b>		-15~70 (-5~158 °F)			
<b>Contamination Level 污染標準</b>		ISO4406. 21/19/16 NAS1638,10			

◆ **HOW TO ORDER 編號說明**

1	2	3	4
VBSE	340	— *	— *

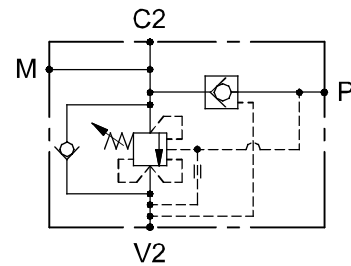
**1 VALVE SERIES 系列名稱**  
VBSE=COUNTER BALANCE VALVES  
抗衡閥

**2 SUBPLATE MOUNTING SIZE 稱呼口徑**  
340 : G3/4"

**3 ADJUSTMENT PRESSURE 壓力調整範圍**

Order 編號	Adjustment pressure 壓力調整範圍
35	100 ~ 350 (bar)

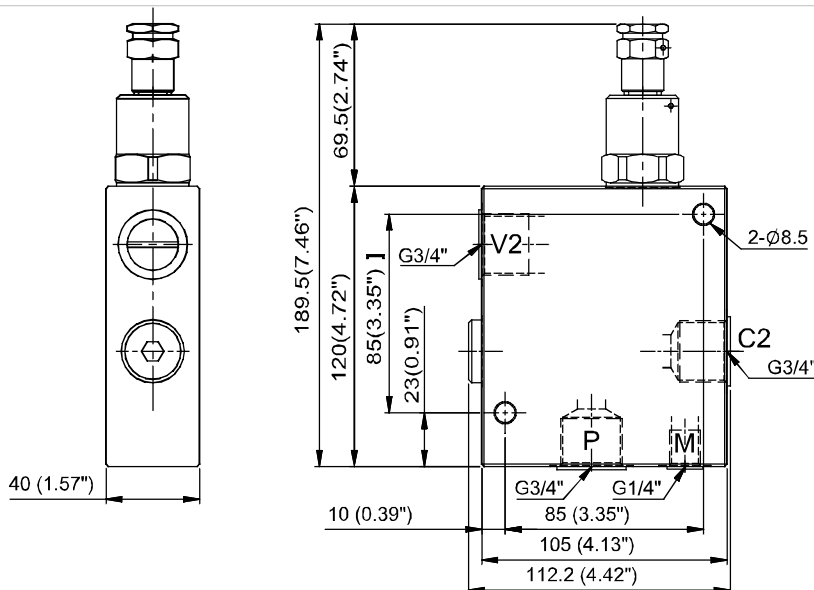
◆ **CONTROL PORT(S) 動作形式**



**4 THREADED TYPE 螺紋規格**  
1P : PT      3G : PF(G)      5B : BSP  
2N : NPT      4A : SAE

◆ **DIMENSIONS 外型尺寸圖**

外型尺寸圖

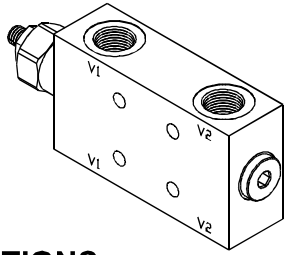


# PRESSURE CONTROL VALVES 壓力控制閥

## VBSE SERIES CARTRIDGE TYPE COUNTER BALANCE VALVES VBSE 系列插入式抗衡閥

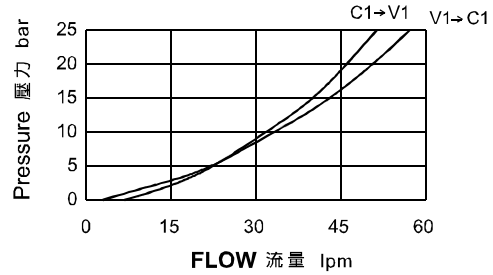
### ◆ MODEL 型 式

VBSE-102G/103G/104G



### ◆ PERFORMANCE (Cartridge Only)

特性曲線



### ◆ SPECIFICATIONS 規 格

Model Number 型式號碼	Maximum Pressure 最大壓力 bar	Adjustment Pressure 壓力調整範圍 bar	Maximum Flow 最大流量 lpm	Pilot Ratio 引導比例	Weight 重量 Kg
VBSE-102G	500 (7252 psi)	100~350	20 (5.28 gpm)	4.3 : 1	1.8 (3.97 lbs)
VBSE-103G			45 (11.89 gpm)		1.8 (3.97 lbs)
VBSE-104G			60 (15.85 gpm)		2.0 (4.41 lbs)
Fluid Type 流體型式		ISO VG 32, 46, 68			
Viscosity 黏性 cSt		10~400 (59~1854 SSU)			
Operating Temperature 操作溫度 °C		-15~70 (-5~158 F)			
Contamination Level 污染標準		ISO4406. 21/19/16 NAS1638,10			

### ◆ HOW TO ORDER 編號說明

1	2	3	4
VBSE	103G	*	*

#### 1 VALVE SERIES 系列名稱

VBSE=COUNTER BALANCE VALVES  
抗衡閥

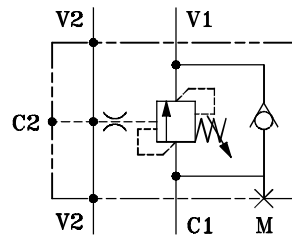
#### 2 SUBPLATE MOUNTING SIZE 稱呼口徑

102G : G1/4    104G : G1/2  
103G : G3/8

#### 3 ADJUSTMENT PRESSURE 壓力調整範圍

Order 編號	Adjustment pressure 壓力調整範圍
35	100 ~ 350 (bar)

### ◆ CONTROL PORT(S) 動作形式

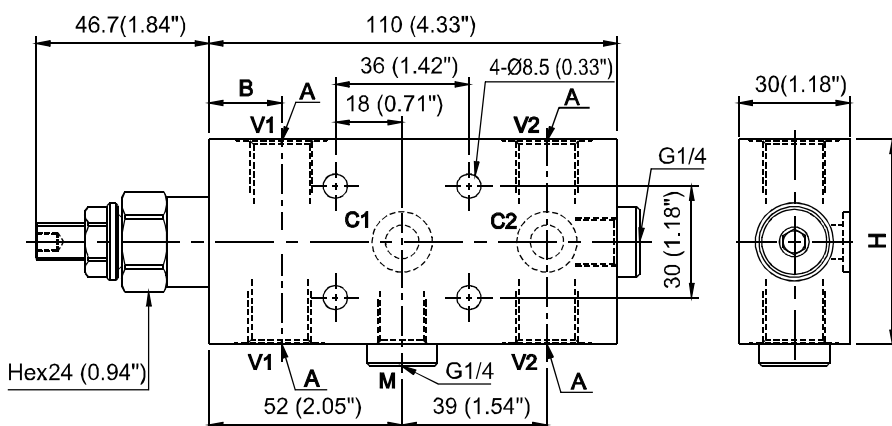


#### 4 PILOT RATIO 引導比例

4A : 4.3:1

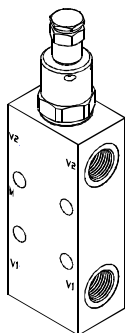
### ◆ DIMENSIONS

外型尺寸圖



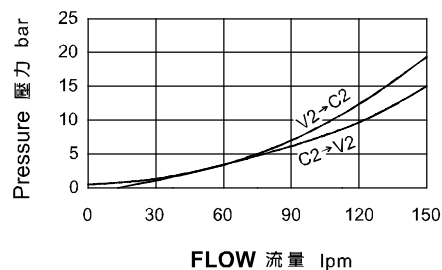
Model 型式	Size 尺寸	A	B	H
VBSE-102G	G1/4	19.5 (0.77")	55 (2.16")	
VBSE-103G	G3/8	19.5 (0.77")	55 (2.16")	
VBSE-104G	G1/2	18 (0.71")	65 (2.56")	

◆ **MODEL 型式**  
VBSE-104F



◆ **PERFORMANCE (Cartridge Only)**

特性曲線



◆ **SPECIFICATIONS 規格**

Model Number 型式號碼	Maximum Pressure 最大壓力 bar	Adjustment Pressure 壓力調整範圍 bar	Maximum Flow 最大流量 lpm	Pilot Ratio 引導比例	Weight 重量 Kg
VBSE-104F	500 (7252 psi)	100~350	150 (39.63 gpm)	4 : 1	2.5 (5.51 lbs)
<b>Fluid Type</b> 流體型式			ISO VG 32, 46, 68		
<b>Viscosity</b> 黏性 cSt			10~400 (59~1854 SSU)		
<b>Operating Temperature</b> 操作溫度 °C			-15~70 (-5~158 °F)		
<b>Contamination Level</b> 污染標準			ISO4406. 21/19/16 NAS1638,10		

◆ **HOW TO ORDER 編號說明**

1	2	3	4
VBSE	104F	— *	— *

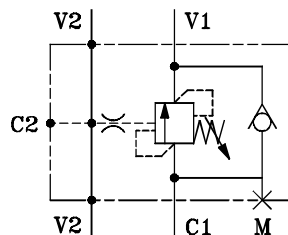
**1 VALVE SERIES 系列名稱**  
VBSE=COUNTER BALANCE VALVES  
抗衡閥

**2 SUBPLATE MOUNTING SIZE 稱呼口徑**  
104F : G1/2"

**3 ADJUSTMENT PRESSURE 壓力調整範圍**

Order 編號	Adjustment pressure 壓力調整範圍
35	100 ~ 350 (bar)

◆ **CONTROL PORT(S) 動作形式**



**4 THREADED TYPE 螺紋規格**

1P : PT    3G : PF(G)    5B : BSP  
2N : NPT    4A : SAE

◆ **DIMENSIONS**

外型尺寸圖

