

# BMM 目录 / Contents



|  |    |
|--|----|
| 1、产品特点 / Product features                              | 04 |
| 2、技术参数 / Technical data                                | 04 |
| 3、安装联接尺寸 / Installation Dimensions                     |    |
| BMM 后油口安装连接尺寸<br>BMM End port Installation Dimensions  | 05 |
| BMM 侧油口安装连接尺寸<br>BMM Side port Installation Dimensions | 06 |
| BMM 轴伸连接尺寸<br>BMM Output Shaft Dimensions              | 07 |
| 4、订货信息 / Order Information                             | 08 |

# BMM系列/ BMM Serie

## 产品特点/ Product features

BMM系列摆线液马达是一种微型轴配流马达，能够在很小的空间安装使用。采用整体式转定子付，4/5齿结构，结构紧凑、重量轻、功率密度大。

其特点：

- 1、整体式转定子付采用世界先进加工工艺手段，确保整机体积小、效率高、转速高、寿命长。
- 2、轴密封承压高，可串、并联使用。
- 3、结构设计先进，功率密度大。

BMM series motor are small volume, economical type, which is designed with shaft distribution flow, which adapt the Gerotor gear set design and provide compact volume, high power and low weight.

Characteristic features:

- 1、Advanced manufacturing devices for the Gerotor gear set, which provide small volume, high efficiency and long life.
- 2、Shaft seal can bear high pressure of motor of which can be used in parallel or in series.
- 3、Advanced construction design, high power and low weight.

## 技术参数/ Technical data

| 型号<br>Type   |          | BMM8 | BMM12.5 | BMM20 | BMM32 | BMM40 | BMM50 |
|--|----------|------|---------|-------|-------|-------|-------|
| 排量 (cm <sup>3</sup> /rev.)<br>Geometric displacement |          | 8.2  | 12.9    | 19.9  | 31.6  | 39.8  | 50.3  |
| 最高转速<br>Max. speed<br>(rpm)                          | 额定 rated | 1537 | 1256    | 814   | 513   | 452   | 358   |
|  | 连续 cont. | 1950 | 1550    | 1000  | 630   | 500   | 400   |
|  | 断续 int.  | 2450 | 1940    | 1250  | 800   | 630   | 500   |
| 最大扭矩<br>Max. torque<br>(N.m)                         | 额定 rated | 8    | 13      | 19    | 31    | 37    | 33    |
|  | 连续 cont. | 11   | 16      | 25    | 40    | 45    | 46    |
|  | 断续 int.  | 15   | 23      | 35    | 57    | 70    | 88    |
|  | 峰值 peak  | 21   | 33      | 51    | 64    | 82    | 100   |
| 最大输出功率<br>Max. output<br>(kw)                        | 额定 rated | 1.3  | 1.7     | 1.7   | 1.7   | 1.7   | 1.2   |
|  | 连续 cont. | 1.8  | 2.4     | 2.4   | 2.4   | 2.2   | 1.8   |
|  | 断续 int.  | 2.6  | 3.2     | 3.2   | 3.2   | 3.2   | 3.2   |
| 最高工作压力<br>Max. pressure<br>drop (MPa)                | 额定 rated | 9    | 9       | 9     | 9     | 8.5   | 6     |
|  | 连续 cont. | 10   | 10      | 10    | 10    | 9     | 7     |
|  | 断续 int.  | 14   | 14      | 14    | 14    | 14    | 14    |
|  | 峰值 peak  | 20   | 20      | 20    | 16    | 16    | 16    |
| 最大流量<br>Max. flow<br>(L/min)                         | 额定 rated | 14   | 18      | 18    | 18    | 20    | 20    |
|  | 连续 cont. | 16   | 20      | 20    | 20    | 20    | 20    |
|  | 断续 int.  | 20   | 25      | 25    | 25    | 25    | 25    |
| 重量 Weight (kg)                                       |          | 1.9  | 2       | 2.1   | 2.2   | 2.3   | 2.4   |

|                  |          |      |
|------------------|----------|------|
| BMMB-50<br>(MPa) | 额定 rated | 14   |
|                  | 连续 cont. | 17.5 |
|                  | 断续 int.  | 22.5 |

\* 额定转速、扭矩是指在额定流量、压力下的输出值。

\* 连续值是指该排量马达可以连续工作的最大值。

\* 断续值是指该排量马达在1分钟内工作6秒的最大值。

\* 峰值是指该排量马达在1分钟内工作0.6秒的最大值。

\* Rated speed and rated torque: output value of speed and torque under rated flow and rated pressure;

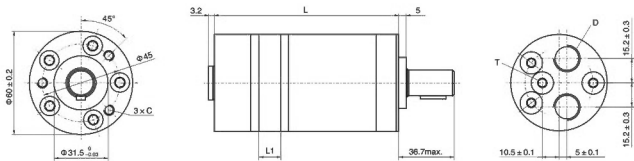
\* Continuous pressure: Max. value of operating motor continuously;

\* Intermittent pressure: Max. value of operating motor in 6 seconds per minute;

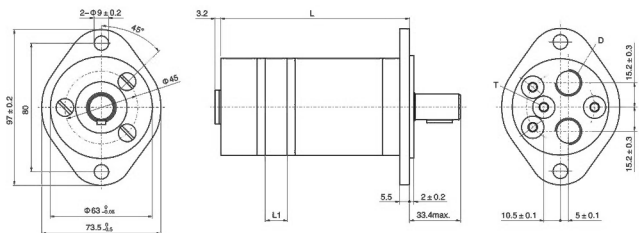
\* Peak pressure: Max. value of operating motor in 0.6 second per minute.

## BMM 后油口安装连接尺寸/ BMM End port Installation Dimensions

### M、U 法兰 Flange



### F 法兰 Flange



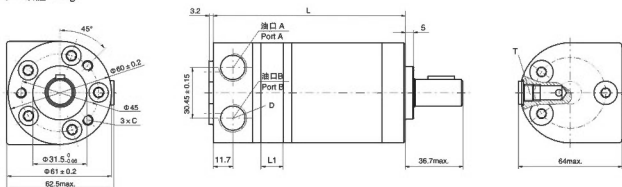
| 型号<br>Type | M、U法兰 Flange |      | F法兰 Flange |      |
|------------|--------------|------|------------|------|
|            | L            | L1   | L          | L1   |
| BMM8       | 104          | 3.5  | 107.5      | 3.5  |
| BMM12.5    | 106          | 5.5  | 109.5      | 5.5  |
| BMM20      | 109          | 8.5  | 112.5      | 8.5  |
| BMM32      | 114          | 13.5 | 117.5      | 13.5 |
| BMM40      | 117.5        | 17   | 121        | 17   |
| BMM50      | 122          | 21.5 | 125.5      | 21.5 |

| 连接形式<br>Mounting | 代号<br>Code | M、U法兰 Flange      |                     | F法兰 Flange        |                   |
|------------------|------------|-------------------|---------------------|-------------------|-------------------|
|                  |            | 1E (深)<br>(depth) | 1U (深)<br>(depth)   | 1E (深)<br>(depth) | 1U (深)<br>(depth) |
| C                |            | 3-M6 (10)         | 3-1/4-28UNF-2B (10) | /                 | /                 |
| D                |            | G3/8 (12)         | 9/16-18UNF (12)     | G3/8 (12)         | 9/16-18UNF (12)   |
| T                |            | G1/8 (8)          | 3/8-24UNF (8)       | G1/8 (8)          | 3/8-24UNF (8)     |

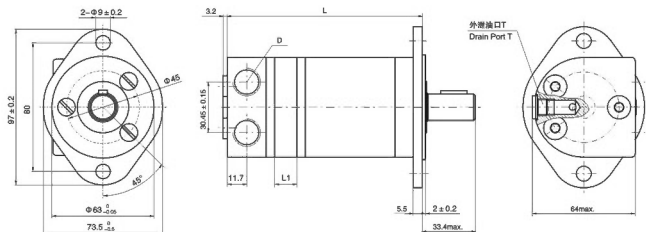
# BMM系列/ BMM Serie

## BMM 侧油口安装连接尺寸/ BMM Side port Installation Dimensions

M、U 法兰 Flange



F 法兰 Flange



| 型号<br>Type | M、U法兰 Flange |      | F法兰 Flange |      |
|------------|--------------|------|------------|------|
|            | L            | L1   | L          | L1   |
| BMM6       | 105          | 3.5  | 108.5      | 3.5  |
| BMM12.5    | 107          | 5.5  | 110.5      | 5.5  |
| BMM20      | 110          | 8.5  | 113.5      | 8.5  |
| BMM32      | 115          | 13.5 | 118.5      | 13.5 |
| BMM40      | 118.5        | 17   | 122        | 17   |
| BMM50      | 123          | 21.5 | 126.5      | 21.5 |

| 连接形式<br>Mounting | 代号<br>Code | M、U法兰 Flange       |                   | F法兰 Flange        |                   |
|------------------|------------|--------------------|-------------------|-------------------|-------------------|
|                  |            | 1E (深)<br>(depth)  | 1U (深)<br>(depth) | 1E (深)<br>(depth) | 1U (深)<br>(depth) |
| C                | 3-M6 (10)  | 3-14-28UNF-29 (10) | /                 | /                 |                   |
| D                | G3/8 (12)  | 9/16-18UNF (12)    | G3/8 (12)         | 9/16-18UNF (12)   |                   |
| T                | G1/8 (8)   | 3/8-24UNF (8)      | G1/8 (8)          | 3/8-24UNF (8)     |                   |

BMM

BMP

OZ

BMR

OK

BMH

BMP1

BMT

BMR

BMS

BM4

BMSY

BMT

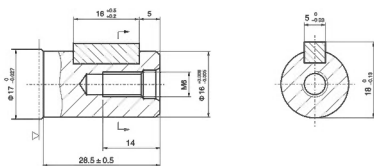
BMV

BMK6

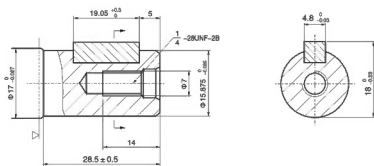
BMR-  
BK01

## BMM 轴伸连接尺寸/ BMM Output Shaft Dimensions

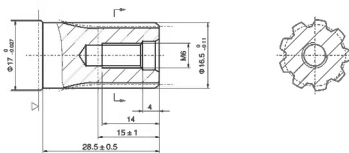
A轴: 圆柱轴  $\Phi 16$   
 平键  $5 \times 5 \times 16$   
 Shaft A: Cylindrical shaft  $\Phi 16$   
 Parallel key  $5 \times 5 \times 16$



B轴: 圆柱轴  $\Phi 15.875$   
 平键  $4.8 \times 4.8 \times 19.05$   
 Shaft B: Cylindrical shaft  $\Phi 15.875$   
 Parallel key  $4.8 \times 4.8 \times 19.05$



C轴: 渐开线花键轴  $B17 \times 14$   
 DIN 5482  
 Shaft C: Involute splind shaft  
 $B17 \times 14$  DIN5482



▽ 马达安装面  
 Motor Mounting Surface

## 订货信息 / Order Information

| 1 - 2 - 3 - 4 - 5 - 6 - 7 - 8 |      |             |   |             |  |                    |  |        |          |      |     |             |         |     |
|-------------------------------|------|-------------|---|-------------|--|--------------------|--|--------|----------|------|-----|-------------|---------|-----|
| 1                             | 2    | 3           |   | 4           |  | 5                  |  | 6      | 7        | 8    |     |             |         |     |
| 型号                            | 排量   | 法兰、止口       |   | 轴伸          |  | 油口、外接口             |  | 旋向况    | 油漆选项     | 特殊功能 |     |             |         |     |
| BMM                           | 8    | M<br>U<br>F | 3-M6圆法兰, 止口Φ31.5×5<br>3-1/4-28UNF圆法兰, 止口Φ31.5×5<br>2-Φ9菱法兰, 止口Φ63×2 | A<br>B<br>C | Φ16轴, 平键5×5×16<br>Φ15.875轴, 平键4.8×4.8×19.05<br>Φ16.5轴, 花键B17×14, DIN5482 | E<br>U<br>1E<br>1U | G3/8, G1/8<br>9/16-18UNF, 3/8-24UNF<br>后油口G3/8, G1/8<br>后油口9/16-18UNF, 3/8-24UNF | 无<br>H | 标准<br>反向 | 00   | 不油漆 | 无<br>B<br>S | 常规<br>0 | 无外泄 |
|                               | 12.5 |             |   |             |  |                    |  |        |          | 无    | 蓝漆  |             |         |     |
|                               | 20   |             |   |             |  |                    |  |        |          | 无    | 黑漆  |             |         |     |
|                               | 32   |             |   |             |  |                    |  |        |          | 无    | 银灰漆 |             |         |     |
| 40                            |      |             |   |             |  |                    |  |        |          |      |     |             |         |     |
| 50                            |      |             |   |             |  |                    |  |        |          |      |     |             |         |     |

注: 用户在使用订货信息时, 将马达结构、排量、安装法兰、轴伸、进出口等信息, 选择左面作色部位的代号按上面格式写给我们即可。  
其中SP配的轴型为T1、D、B、F、G若所选规格不在上述表中或特殊要求, 请与我们联系。

| 1 - 2 - 3 - 4 - 5 - 6 - 7 - 8 |              |             |   |              |  |                      |  |                    |                      |                    |          |                |               |               |
|-------------------------------|--------------|-------------|---|--------------|--|----------------------|--|--------------------|----------------------|--------------------|----------|----------------|---------------|---------------|
| 1                             | 2            | 3           |   | 4            |  | 5                    |  | 6                  | 7                    | 8                  |          |                |               |               |
| Type                          | Displacement | Flange      |   | Output shaft |  | Ports and drain port |  | Rotation direction | Paint                | Unusually function |          |                |               |               |
| BMM                           | 8            | M<br>U<br>F | 3-M6 Circle-flange, pilot Φ31.5×5<br>3-1/4-28UNF Circle flange, pilot Φ31.5×5<br>2-Φ9 Rhomb-flange, pilot Φ63×2 | A<br>B<br>C  | Shaft Φ16, parallel key 5×5×16<br>Shaft Φ15.875, parallel key 4.8×4.8×19.05<br>Shaft Φ16.5, involute B17×14, DIN5482 | E<br>U<br>1E<br>1U   | G3/8, G1/8<br>9/16-18UNF, 3/8-24UNF<br>后油口G3/8, G1/8<br>后油口9/16-18UNF, 3/8-24UNF | Omit<br>R          | Standard<br>Opposite | 00                 | No paint | Omit<br>B<br>S | Standard<br>0 | No case drain |
|                               | 12.5         |             |   |              |  |                      |  |                    |                      | Blue               |          |                |               |               |
|                               | 20           |             |   |              |  |                      |  |                    |                      | Black              |          |                |               |               |
|                               | 32           |             |   |              |  |                      |  |                    |                      | Silver grey        |          |                |               |               |
| 40                            |              |             |   |              |  |                      |  |                    |                      |                    |          |                |               |               |
| 50                            |              |             |   |              |  |                      |  |                    |                      |                    |          |                |               |               |

Note: When the table is used, please fill the code of left rows in the table and give us, which the code information is consists of construction, displacement, mounting flange, output shaft and ports. If the specification is not in the table or you have specific requirements, please contact us.